
Technical Document

Cisco 3750G and 3560G Configuration for WheatNet-IP

Overview

Let's take a look at what needs to be done to get your Cisco 3750G/3560G ready for the installation of your WheatNet-IP system. Properly configuring your switch allows you to take advantage of the "management" capabilities to control network traffic and allows the network to operate at its highest potential. This becomes necessary to prevent overloading the network as the system size increases.

In this setup process you will setup switch ports according to the type of device connecting to that port. You will be setting things like VLAN access, Trunking, Speed, etc. Each section below gives you the exact commands needed to get your Wheatnet-IP network up running.

Below is a chart that gives you some information about the command you will be using to complete the setup. This can be a quick reference for you as

Command	Purpose
Configure Terminal	Enter Global configuration mode on switch
Interface	Enter interface configuration mode
Switchport mode access	Configures the port as an access port
Switchport mode Trunk	Configures port for trunking to other switches
Switchport nonegotiate	Prevents DTP frames from being generated
Spanning-tree portfast	Enables portfast on the switch port
Show running-config	Show the current running configuration
Write memory	Writes the configuration to memory on the switch
IP igmp snooping querier	Enables IGMP querier
IP igmp snooping querier timer expiry	Set the length of time until the IGMP querier expires

This document will explain the initial configuration of the Cisco 3750G/3560G switch. To get started you will need the blue console cable that came with your switch. Go ahead and connect the console cable to the serial port on your pc and the RJ-45 to the console port on the switch. If your pc is not equipped with a serial port you will need a USB to Serial converter.

Next let's get your pc ready to communicate. You will need a terminal program such as HyperTerminal to finish this portion of the setup. HyperTerminal is an

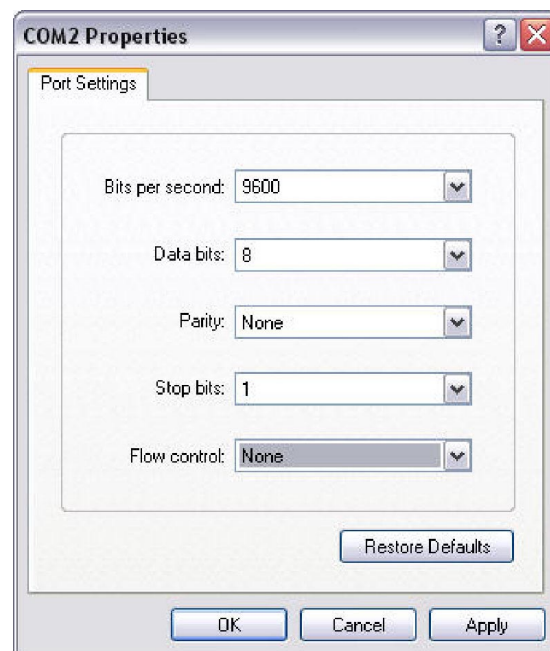
application you can use in order to connect your computer to other remote systems. These systems include other switches, routers, other computers, and Telnet sites.

HyperTerminal is located under the Start menu of your Windows 2000/XP PC. If you are using Windows Vista or Windows 7 you will need to install a similar terminal program to complete the setup.

To get started, open HyperTerminal and start a new connection. The terminal session should be setup using 9600Baud, 8 bit, no Parity, and no Flow control.

For those who are familiar with the Cisco IOS you may wish to jump ahead to the commands. For the rest, keep reading and we'll walk you through it step by step.

Along the way we'll even explain why we use the commands below so that you have some basic understanding of what you are doing. Hopefully you will walk away with some new found knowledge.



Privileged EXEC Mode

Now that we are connected to the switch let's login. When logging into a Cisco switch under the default configuration, you are in user EXEC mode (level 1). In EXEC mode, you have limited access to the status of the switch. However, you can't make any changes or view the running configuration file.

Because of these limitations, you need to type *enable* to get out of user EXEC mode. By default, typing *enable* takes you to "Privileged" EXEC mode (Level 15). In the Cisco IOS, this level is equivalent to having root privileges in UNIX or administrator privileges in Windows. In other words, you have full access to the switch.

Let's get started on the configuration of your switch. Type "*enable*" command at the prompt. When prompted, enter the password and press Enter again. If no password has been defined just press Enter.

NOTE: The command prompt now ends with "#" indicating you are now at the Privileged EXEC mode (Level 15).

Global Configuration Mode

To enter the IP address and Subnet Mask for the VLAN or configure the switch ports you must first enter the configuration mode. To enter the global configuration mode on the 3750G/3560G type "**Config T**" and press enter. This places the switch in Global configuration mode and will allow configuration from the terminal window for the selected interface. You should now have the **switch (config)#** prompt.

Configuring the VLAN Interface

A VLAN is a switched logical network that is segmented based on the function or application. VLANs are virtual LANs but have the same attributes as the physical LAN. VLANs allow a user to create a virtual broadcast domain in which traffic can be isolated

to keep it reaching unwanted destinations. Any switch port can belong to a VLAN, and unicast, broadcast, and multicast packets are forwarded only to those end stations assigned to that VLAN.

Now that you are in the Global configuration mode you need to select the interface that you would like to configure. We'll start with the default VLAN.

The switch will come with a default VLAN enabled. In the default configuration all ports on the switch have been assigned to VLAN1. The command below selects the default VLAN for configuration to segment network traffic on the switch. If you are adding an additional VLAN to existing hardware, substitute that VLAN number in place of 1.

Enter the following commands (“XXX” = the actual network IP address)

```
interface Vlan1
ip address 192.168.87.XXX 255.255.255.0
end
```

Let's look at what you just setup. By typing “interface Vlan1” you are entering the configuration for that VLAN. The “IP Address” Command simply sets the IP address of the VLAN1 interface for remote management purposes. The IP address must be unique on the network.

IGMP Snooping Querier Configuration

By default, IGMP is enabled globally on the switch. To setup IGMP Snooping Querier on the switch you must be in the Global configuration mode. To enter the configuration mode once again type “**Config T**” and press enter.

Enter the following commands:

```
ip igmp snooping querier
ip igmp snooping querier max-response-time 25
ip igmp snooping querier timer expiry 205
end
```

By default IGMP Snooping is globally enabled on the switch. It is enabled on VLANs by default. Global IGMP snooping takes precedent over VLAN IGMP Snooping. If globally disabled you cannot enable IGMP Snooping on a per VLAN basis.

The commands above simply enable the querier on the switch and set a few values for maximum response time and the expiration duration for the querier.

Configuring Gigabit Ports Connecting to WheatNet-IP I/O Blades and PC Drivers

Configuring the ports on the Cisco 3750G and 3560G is a key step in ensuring optimal performance of the Wheatnet-IP network. This section will guide you in the setup of each port used for Wheatnet-IP I/O Blades.

Switch ports operate in one of three modes, dynamic, trunk, or access mode.

Switch ports connecting to Wheatstone-IP devices must be in Access mode. Access mode places the port in static access mode and gives it access to the default VLAN. The

switchport nonegotiate command disables the Dynamic Trunking Protocol and tells the port not to generate DTP frames.

To setup ports on the switch you must also be in the Global Configuration mode. To enter the configuration mode once again type “**Config T**” and press enter.

Enter the following commands

```
Interface gig 0/x (X=the Ethernet port being configured)
switchport mode access
switchport nonegotiate
speed 1000
spanning-tree portfast
end
```

Ports on the 3750G and 3560G can be configured individually or in a “Range.” If range is desired type **Interface range gig1/0/1 - 24** using the desired number of ports.

Configuring Gigabit Ports Connecting to Wheatnet IP Control Surfaces, GP Panels, and XY Controllers

Enter the following commands

```
Interface gig 0/x (X=the Ethernet port being configured)
switchport mode access
switchport nonegotiate
speed 100
spanning-tree portfast
end
```

Ports on the 3750G/3560G can be configured individually or in a “Range.” If range is desired type **Interface range gig0/1 - 24** using the desired number of ports.

Configuring Ports for Linking to Other Network Switches

Trunk mode is used when connecting another switch to the port.

To set a specified port to trunk mode when connecting to another network switch the port needs to be set for trunk mode. To setup Gigabit ports on the switch you must also be in the Global Configuration mode. To enter the configuration mode once again type “**Config T**” and press enter.

Enter the following commands.

```
Interface gig 0/x (X=the Ethernet port being configured)
switchport trunk encapsulation dot1p
switchport mode trunk
switchport nonegotiate
end
```

Checking and Saving the Switch Configuration

When you are done, check the switch configuration by typing the following command from the command prompt.

```
show running-config
```

Once you are sure you have the correct configuration you need to save it. You can save the configuration by typing one of the following commands

```
copy running-config startup-config
```

or

```
write memory
```

Below is a diagram that shows you what a typical configuration might look like.

