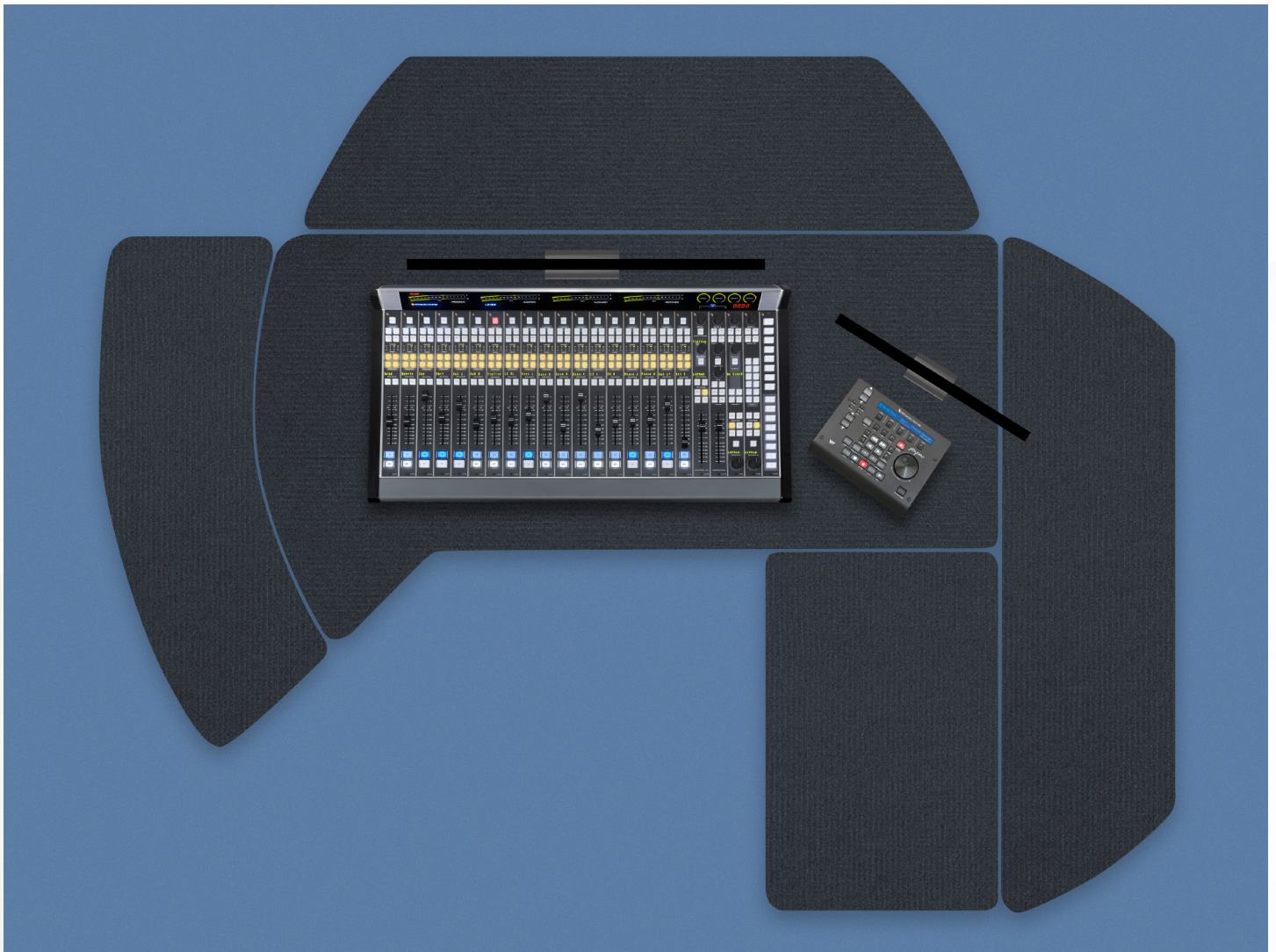


 *Wheatstone*
FURNITURE





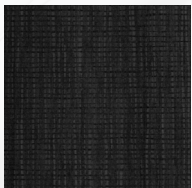
Overview

QuickLine studio furniture delivers Wheatstone ergonomics and comfort in modular, quick-ship configurations at a price that won't bust the tightest budgets. We've developed 32 functional configurations for QuickLine using only five modular components. This flexibility lets you easily and economically modify your configuration to meet changing requirements.

Installation is easy. Delivered knocked-down to minimize shipping costs, QuickLine furniture arrives with all necessary hardware and assembly instructions. Racks below the counters and standard punch-block integration make equipment installation a snap. Durable, high-pressure laminate tops and countertop edges help your QuickLine furniture keep its attractive appearance for years to come.

Features

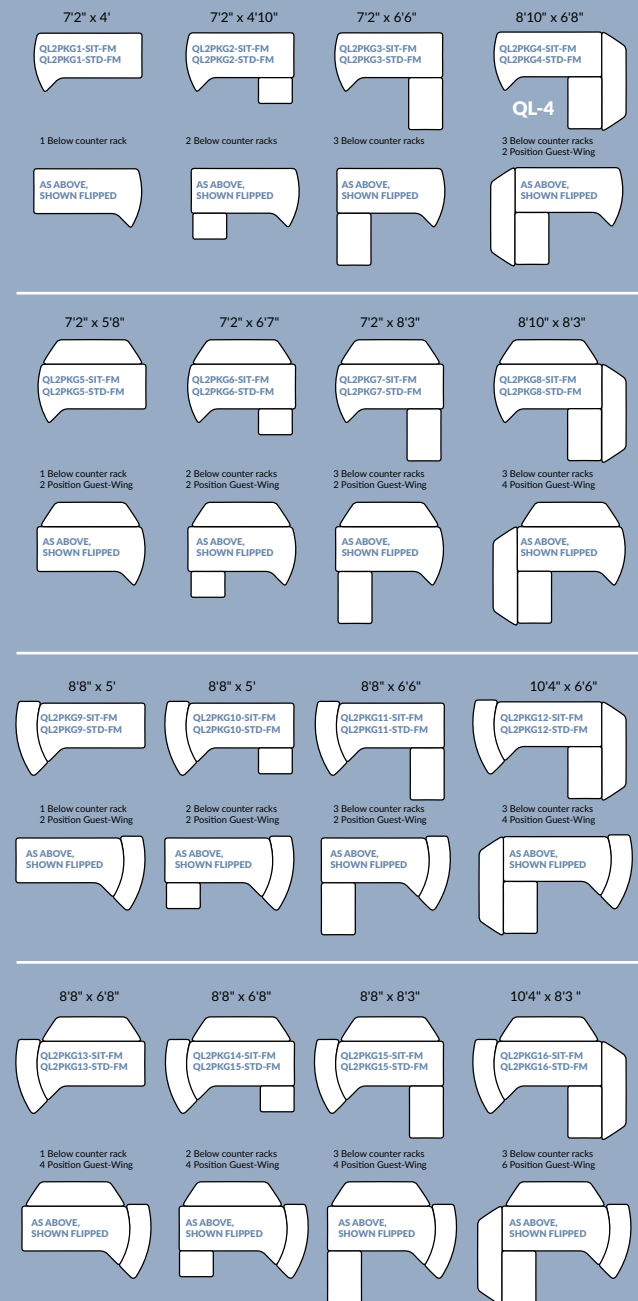
- Fits studios as small as 10' x 8'
- Surfaces are finished same top and bottom and can be flipped for left or right hand configurations
- Removable rear access doors
- Quick disconnect hinges on doors allow for complete removal
- Available for sit-down (30") and stand-up (36") operations
- GREENGUARD and LEED certified materials
- Finish is Wilsonart Carbon Mesh



Wilsonart
Carbon Mesh

QuickLine Configuration Chart

Note: Main 7'2" x 4" surface can be flipped over for either left or right hand configuration. Both flat sides are finished to be used as the top side.



SIT= sit down height • STD= stand up height



Overview

For sleekly styled surfaces, SmoothLine™ modular studio furniture is an excellent choice.

SmoothLine enables your studio to reflect the image you want — custom-level craftsmanship, quality, flexible configurations and features — without a custom-manufactured price tag.

Features

- Moderately priced for rooms of any size
- Freeform countertops
- Modular casework based on standard equipment racks
- Concealed hinges and rounded edges
- Finished interiors with high-pressure laminate exteriors
- Extensive laminate, and solid surface options for casework and countertops

Designed and built by
Wheatstone Corporation
600 Industrial Drive | New Bern NC 28562-5440 USA
phone 1.252.638-7000 | fax 1.252.635-4857
wheatstone.com | sales@wheatstone.com

